

# B200003

# JC20



- ▶ 主要技术特性 (Main Specifications)
- ▶ 适用导线规格 (Applicable wire) : AWG30#~24#
- ▶ 适用基板厚度 (Applicable PC board thickness) : 1.2mm~1.6mm
- ▶ 温度范围 (Temperature range) : -25℃~+85℃
- ▶ 额定电压 (Voltage rating) : 250V AC, DC
- ▶ 额定电流 (Current rating) : 2A AC, DC
- ▶ 接触电阻 (Contact resistance) :  $\leq 0.02\Omega$
- ▶ 绝缘电阻 (Insulation resistance) :  $\geq 1000M\Omega$
- ▶ 耐压 (Withstanding voltage) : 800V AC/minute

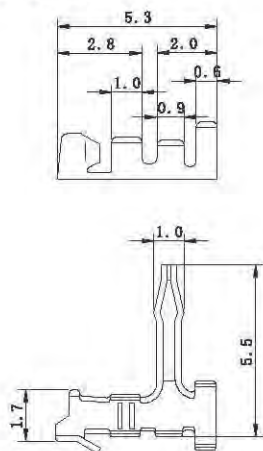
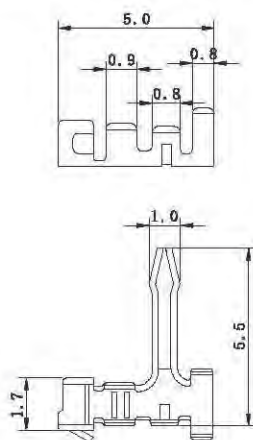
### 材料及电镀规格 Material and Finish

型号 Type	材料 Material	材料厚度 Material Thickness	电镀规格 Finish
孔座 HOUSING	PA66 UL94V-0	—	N/A
端子 TERMINAL	锡青铜 Phosphor bronze	0.2mm	镀锡 Tin-plated

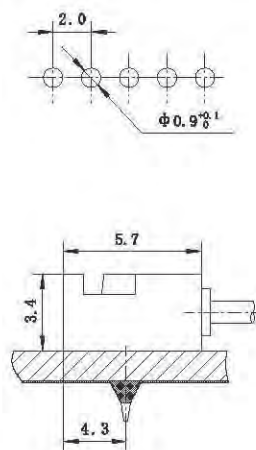
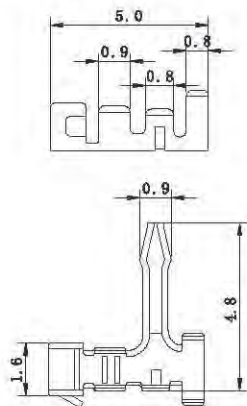
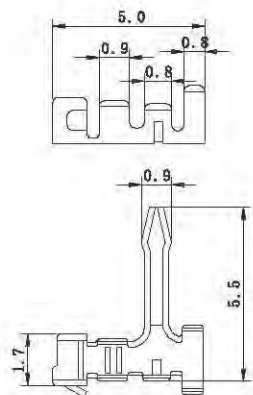
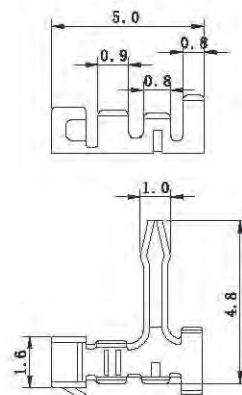
### 产品尺寸图 Product size chart

 单位: mm 一般公差:  $\pm 0.20$ 

### TERMINAL

**B200003-4** **JC20**

**B200003-4A** **JC20-A**


安装尺寸 (Mounting measureme)


**B200003-4B** **JC20-B**

**B200003-4C** **JC20-C**

**B200003-4D** **B2011TRB-2e/A**


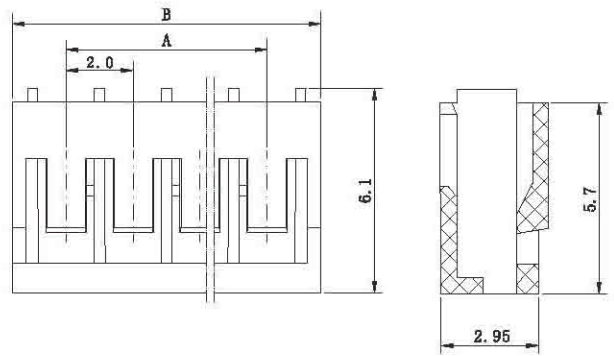
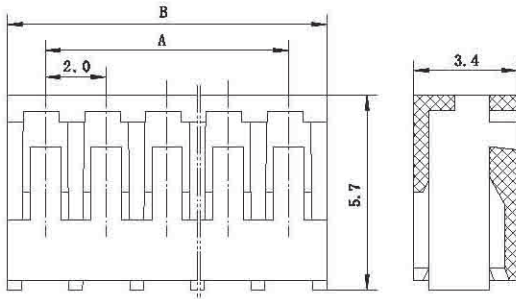
# B200003

# JC20

## HOUSING

B200003-2

B200003-2B



## HOUSING

极数 Circuits	型号 Type	尺寸(Dimensions)mm		备注型号 P. S. Type
		A	B	
2	B200003-2-02	2.0	4.5	JC20-02P
3	B200003-2-03	4.0	6.5	JC20-03P
4	B200003-2-04	6.0	8.5	JC20-04P
5	B200003-2-05	8.0	10.5	JC20-05P
6	B200003-2-06	10.0	12.5	JC20-06P
7	B200003-2-07	12.0	14.5	JC20-07P
8	B200003-2-08	14.0	16.5	JC20-08P
9	B200003-2-09	16.0	18.5	JC20-09P
10	B200003-2-10	18.0	20.5	JC20-10P
11	B200003-2-11	20.0	22.5	JC20-11P
15	B200003-2-15	28.0	30.5	JC20-15P

## HOUSING

极数 Circuits	型号 Type	尺寸(Dimensions)mm		备注型号 P. S. Type
		A	B	
2	B200003-2B-02	2.0	5.2	JC20B-02P
3	B200003-2B-03	4.0	7.2	JC20B-03P
4	B200003-2B-04	6.0	9.2	JC20B-04P
5	B200003-2B-05	8.0	11.2	JC20B-05P
6	B200003-2B-06	10.0	13.2	JC20B-06P
7	B200003-2B-07	12.0	15.2	JC20B-07P
8	B200003-2B-08	14.0	17.2	JC20B-08P
9	B200003-2B-09	16.0	19.2	JC20B-09P
10	B200003-2B-10	18.0	21.2	JC20B-10P
11	B200003-2B-11	20.0	23.2	JC20B-11P
15	B200003-2B-15	28.0	31.2	JC20B-15P